



GAT MONTHLY MEMBERSHIP PROGRESS REPORT

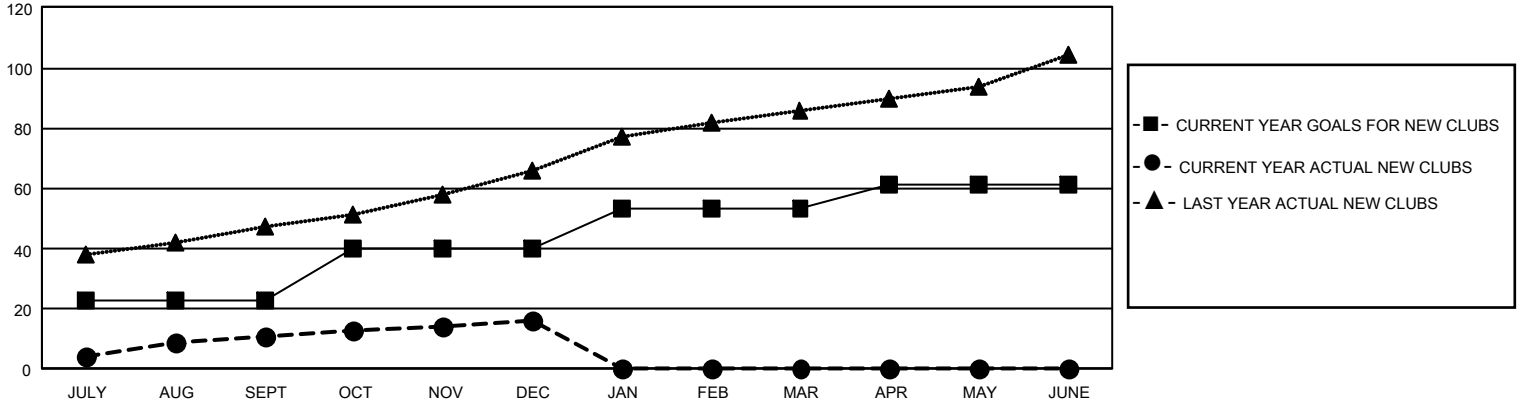
Results as of: 12/31/2022

GMT Constitutional Area 6, Group J

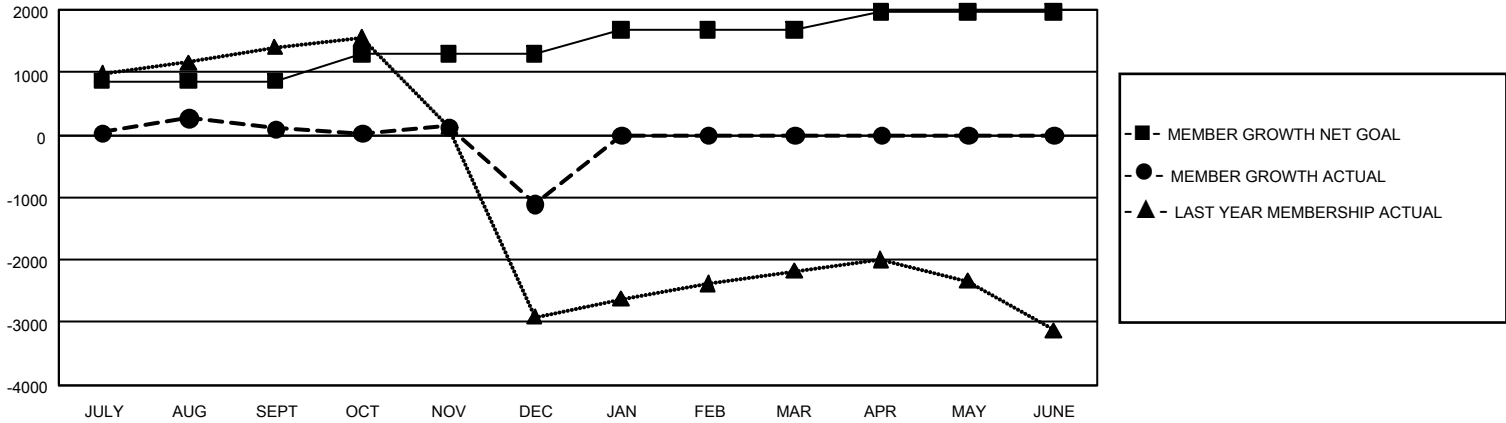
REPORT DOES NOT INCLUDE CLUBS IN UNDISTRICTED AREAS.

Clubs				Members			
RESULTS FOR 2022-2023				RESULTS FOR 2022-2023			
QUARTER	NEW CLUB GOAL	NEW CLUBS	DROPPED CLUBS	QUARTER	MEMBER GROWTH NET GOAL	MEMBER GROWTH ACTUAL	DROPPED MEMBERS ACTUAL (including transfers)
JULY/AUG/SEPT	69	11	103	JULY/AUG/SEPT	860	1,077	872
OCT/NOV/DEC	51	5	21	OCT/NOV/DEC	435	995	2,106
JAN/FEB/MAR	39	0	0	JAN/FEB/MAR	385	0	0
APR/MAY/JUNE	24	0	0	APR/MAY/JUNE	285	0	0

GOALS AND ACTUAL NEW CLUBS CUMULATIVE



GOALS AND ACTUAL MEMBERS CUMULATIVE



DROPPED CLUBS: 124	312 CLUBS OF 941 ADDED 1 OR MORE NEW MEMBERS	<u>GENDER DISTRIBUTION</u>	
<u>DROPPED MEMBERS</u>		MALE	17,146 (62.11%)
DECEASED	45	FEMALE	10,456 (37.87%)
CLUB CANCELLED	393	NON BINARY	0 (0.00%)
OTHER	2,540	PREFER NOT TO ANSWER	5 (0.02%)
TOTAL	2,978	TOTAL FAMILY UNIT MEMBERS	18,766
	CLICK HERE FOR CUMULATIVE MEMBERSHIP DATA	FAMILY MEMBERS PAYING HALF DUES	11,984